

¿Cómo llegas a la escuela?

Step 1

Interview ten of your classmates. How do they get to school? At what time do they arrive? Write their answers in complete sentences.

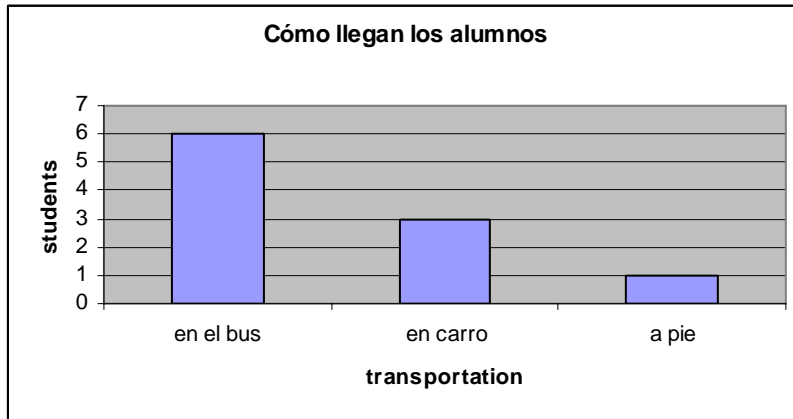
Ex.: Diego llega a la escuela en carro. Llega a las ocho menos diez.

Laura llega a la escuela en el bus escolar. Llega a las ocho en punto.

Step 2

After you have interviewed ten classmates and written their answers, make two bar graphs. The first should show how many students get to school on the bus, how many get there in a car, etc. The second graph should show how many students arrive at different times (how many get to school at 7:45, how many at 8:00, etc.)

Ex.



(Remember that you should have two graphs: one for how students arrive and one for what time they arrive. Your graphs can be drawn by hand; they do not have to be done on the computer.)

Step 3

Write sentences to summarize the results on your graph.

Ex.: Seis alumnos llegan en el bus escolar.

Tres alumnos llegan en carro.

Un alumno llega a pie.